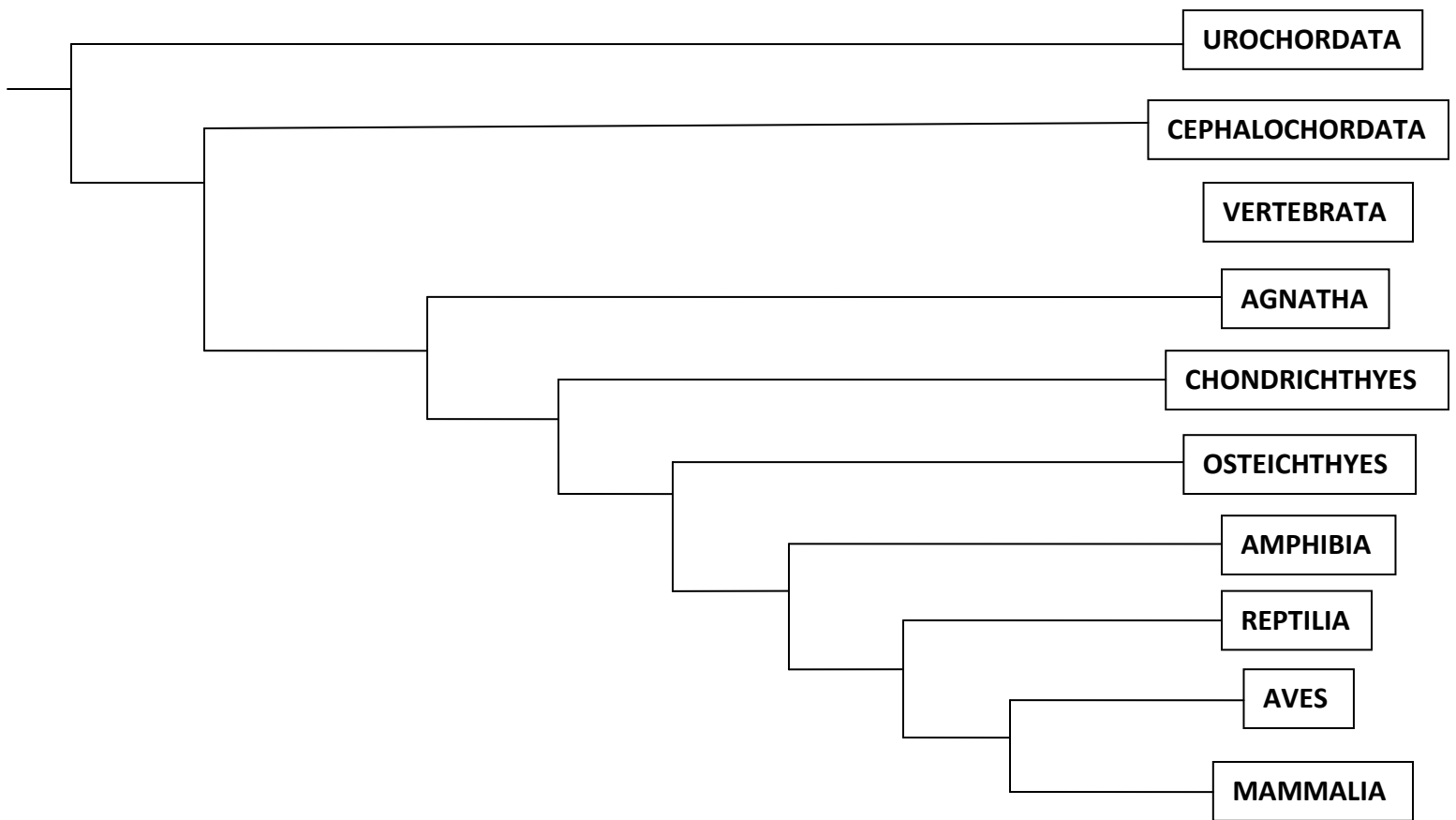


CHORDATE DICHOTOMOUS KEY



- A. Bony skeleton
- B. Feather body covering
- C. Lack jaws
- D. Gills all life
- E. Fur body covering
- F. Adults lack definite head
- G. Skeleton cartilage
- H. Notochord changed to vertebra

- I. Lungs
- J. Definite head
- K. Warm blooded
- L. Has jaws
- M. Gills as larva, lungs as adults
- N. Cold blooded
- O. Notochord retained not changed
- P. Lungs all life